



BEECH III

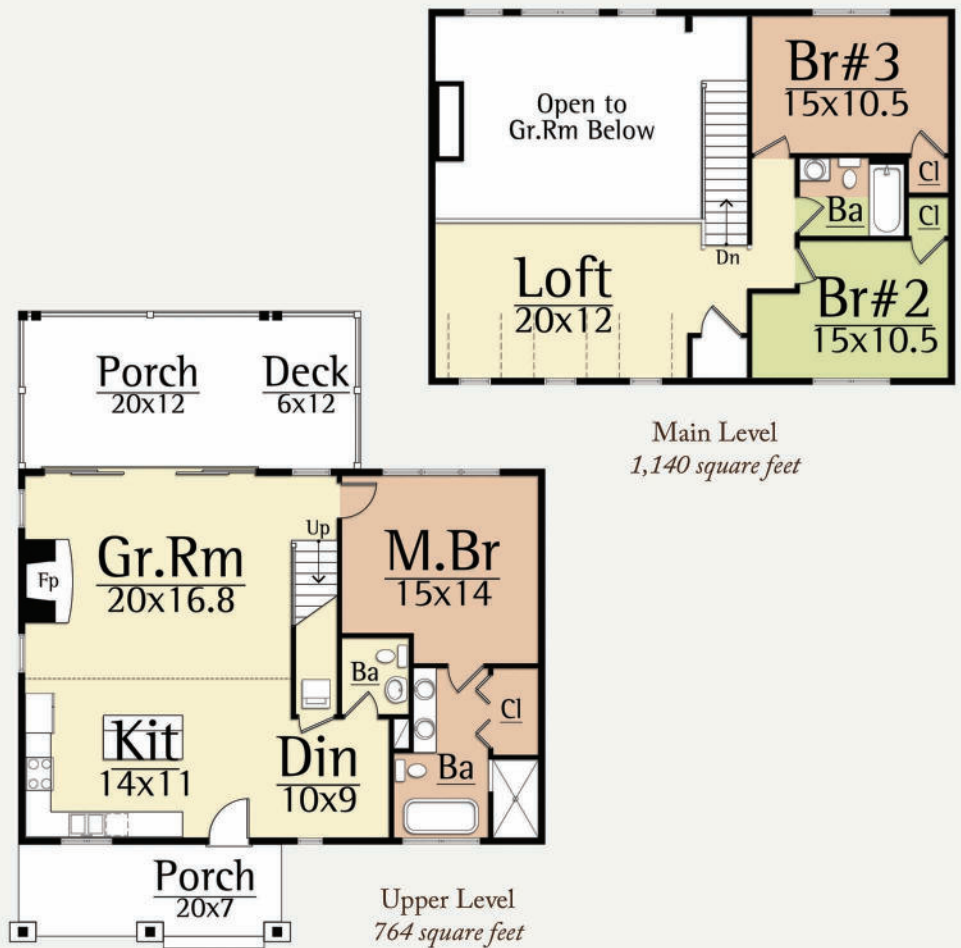
CONTEMPORARY LIVING

1,904 total square feet

3 Br, 2.5 Ba

The design of the Beech III modern farmhouse combines the charm of a traditional country home with the sleekness of contemporary architecture.

The exterior features a gabled roof, board and batten siding, and a wraparound porch that invites relaxation. The interior is spacious and bright, with an open floor plan that connects the living room, dining room, and kitchen. The master suite is located on the main floor, while the other two bedrooms share a full bath upstairs. The design also includes a half bath, a laundry room, and a loft that can be used as an office or a playroom. The Beech III is a perfect blend of style and functionality.



MODERN HOME DESIGN

www.MossCreekModern.com - 800.737.2166