



ZITHER

1,127 total square feet

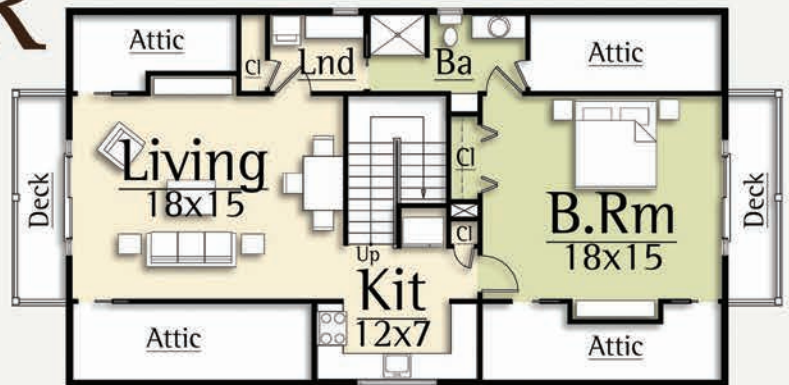
1 Br, 1.5 Ba

The Zither was greatly popular in the America in the late 19th through early 20th century as “parlor” instrument.

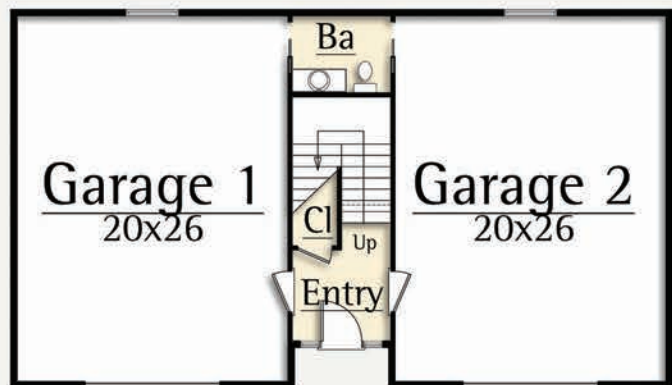
Today, the Zither carriage house design by MossCreek harkens back to the same early American period with a beautiful carriage house look combined with a floor plan for modern living.

More than just a garage, the Zither carriage house combines automobile storage and living into one compact design. The Zither features a two car garage, half bath, and entry foyer on the main level.

The upper level features a large bedroom suite, generous living area with vaulted ceiling and an open kitchen that completes the dramatic interior.



Upper Level
978 square feet



Main Level
149 square feet Conditioned
(1,201 sf Unconditioned Garage)

