

RUSTIC AMERICAN HOME DESIGN

TIMBERLINE



Copyright 2012 MossCreek
www.MossCreek.net
800.737.2166

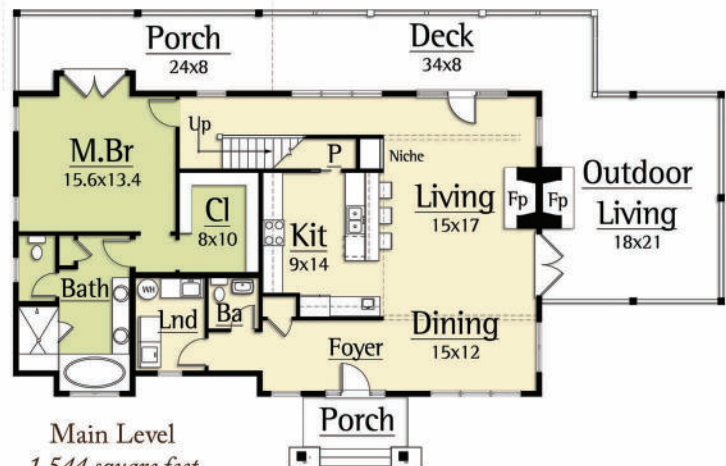
On June 11, 1936, at the brutal height of the Great Depression, ground was broken for a project unique in America. Timberline Lodge was built entirely by hand, inside and out, by unemployed craftspeople hired by the Federal Works Projects Administration. The building is a tribute to their skills and a monument to a government which responded not only to the physical needs of its people in a desperate time, but also to the needs of their spirits.

The Timberline Camp by MossCreek captures this same spirit with 3 bedrooms, 2 1/2 baths, with a master on the main level. A large story and a half vaulted Great Room with exposed log trusses and an open Kitchen / Dining Room complete a dramatic interior. Exterior log detailing completes the feel of this pacific northwest camp.

TIMBERLINE
2,331 total square feet



Upper Level
787 square feet



Main Level
1,544 square feet