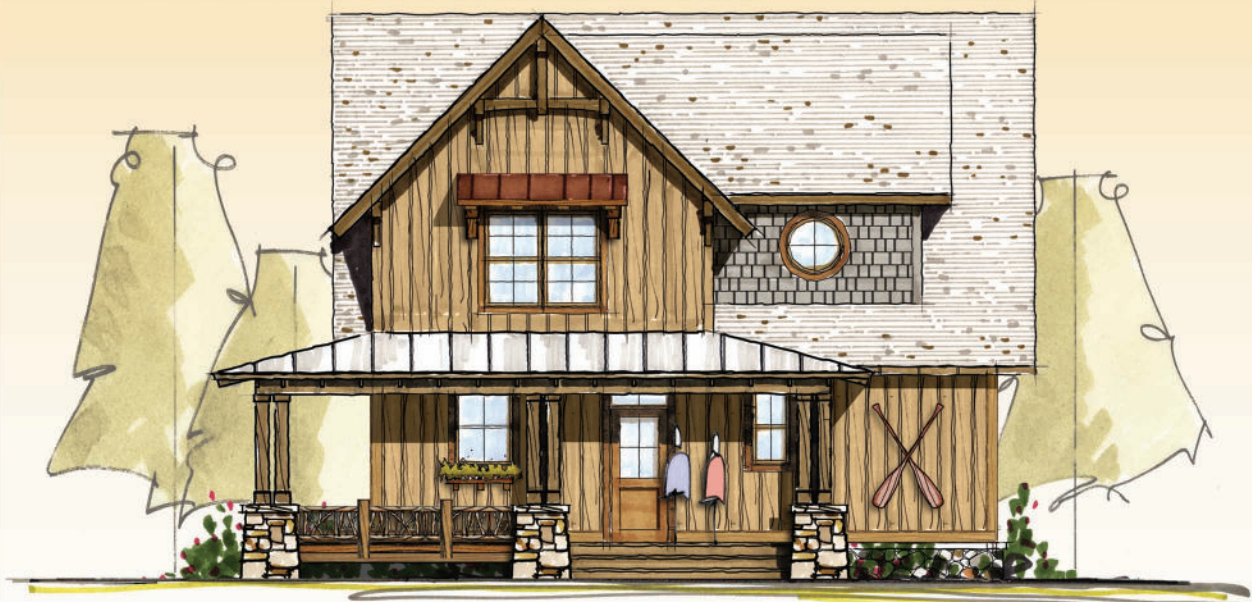


RUSTIC AMERICAN HOME DESIGN

CUMBERLAND TRACE

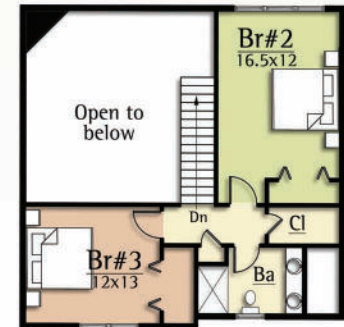
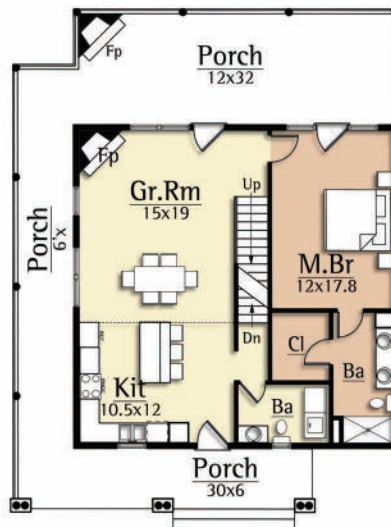


Copyright 2012 MossCreek
www.MossCreek.net
800.737.2166

As westward migration increased, communities developed along the Cumberland Trace. In 1785, settlers built McFadden's Station on the Cumberland Trace near the Barren River approximately where I-65 crosses the Barren River) as a "rest stop" for travelers .

The Cumberland Trace by MossCreek creates a "rest stop for travelers" as well. Open plan living and a Master Bedroom on the main level are a welcomed comfort. Generous Guest Bedrooms complete the perfect floor plan. With the use of natural materials of wood, stone, and glass, the Cumberland Trace is the perfect small rustic home.

CUMBERLAND TRACE
1,630 total square feet



Upper Level
606 square feet

Main Level
1,024 square feet