

RUSTIC AMERICAN HOME DESIGN

CIDER MILL

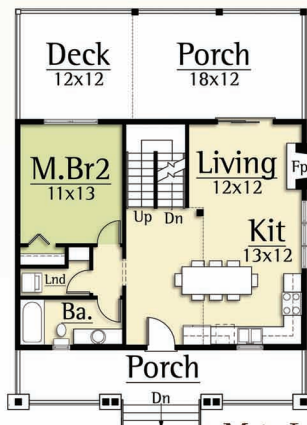


Copyright 2012 MossCreek
www.MossCreek.net
800.737.2166

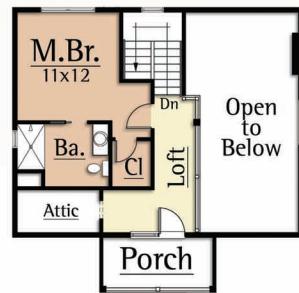
The Cider Mill is a part of America's rich heritage of living off the land. Cider Mills were powered hand, water power, or horse-power, and were used to grind apples in the first step of making apple cider. Today, apple cider has an enthusiastic following in the form of cider festivals and new recipes.

The Cider Mill by MossCreek draws its life from the land as well. With its narrow footprint, the Cider Mill is amenable to almost any site condition. Constructed of natural materials of wood, stone, and glass, the Cider Mill is the perfect small rustic home.

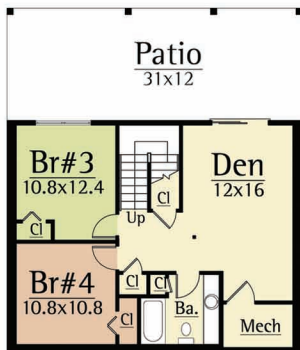
CIDER MILL
2,020 total square feet



Main Level
790 square feet



Upper Level
440 square feet



Lower Level
790 square feet