

# MOSSCREEK

RUSTIC AMERICAN HOME DESIGN

## BUCKEYE



Copyright 2012 MossCreek  
www.MossCreek.net  
800.737.2166

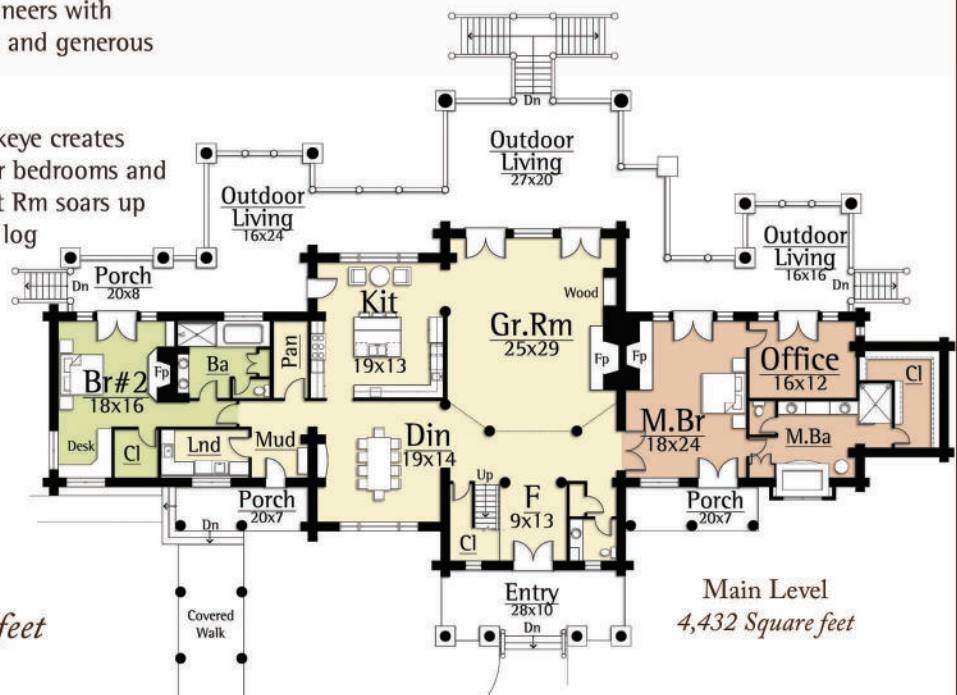
The Buckeye name is an original term of endearment for the pioneers on the Ohio frontier. The name comes from the American Buckeye tree who's fruit contains tannic acid that can be used to preserve leather.

The Buckeye by MossCreek harkens back the days of the pioneers with rugged log construction and generous covered porches.

On the interior, the Buckeye creates spacious living with four bedrooms and grand spaces. The Great Rm soars up to a vaulted ceiling and log trusses. Two master suites on the main level complete this rugged luxury home.



Upper Level  
1,622 square feet



BUCKEYE  
6,054 total square feet

Main Level  
4,432 Square feet

Copyright 2012 MossCreek