

MOSSCREEK

RUSTIC AMERICAN HOME DESIGN

AMERICAN GOTHIC

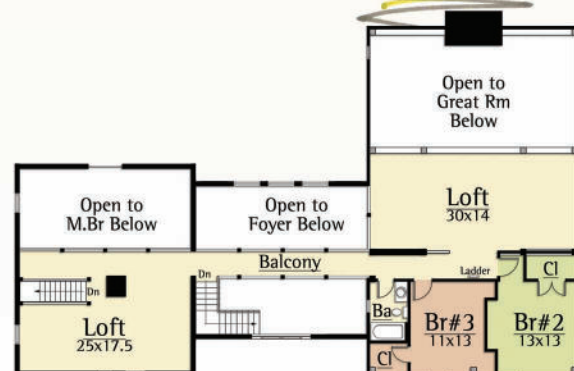


Copyright 2012 MossCreek
www.MossCreek.net
800.737.2166

An early Pennsylvania log house and an Ohio post and beam bank barn are combined to create this three bedroom, three-bath house. The log house style is circa 1790's. The barn style is circa 1830's. The original framing of these barns are massive oak beams with a queen post roof system.

A loft above the kitchen area creates a family room. One large beam spans the entire building to support the loft. A vaulted ceiling with an open-hearth fireplace at the far end of the great room gives this home an open spacious feel. Windowed cupolas patterned after original barn elements provide extra light and ventilation.

AMERICAN GOTHIC
4,621 total square feet



Copyright 2012 MossCreek

www.MossCreek.net • 800.737.2166